

Wood-concrete composite system

Strengthening of ceiling frameworks in new builds and renovations

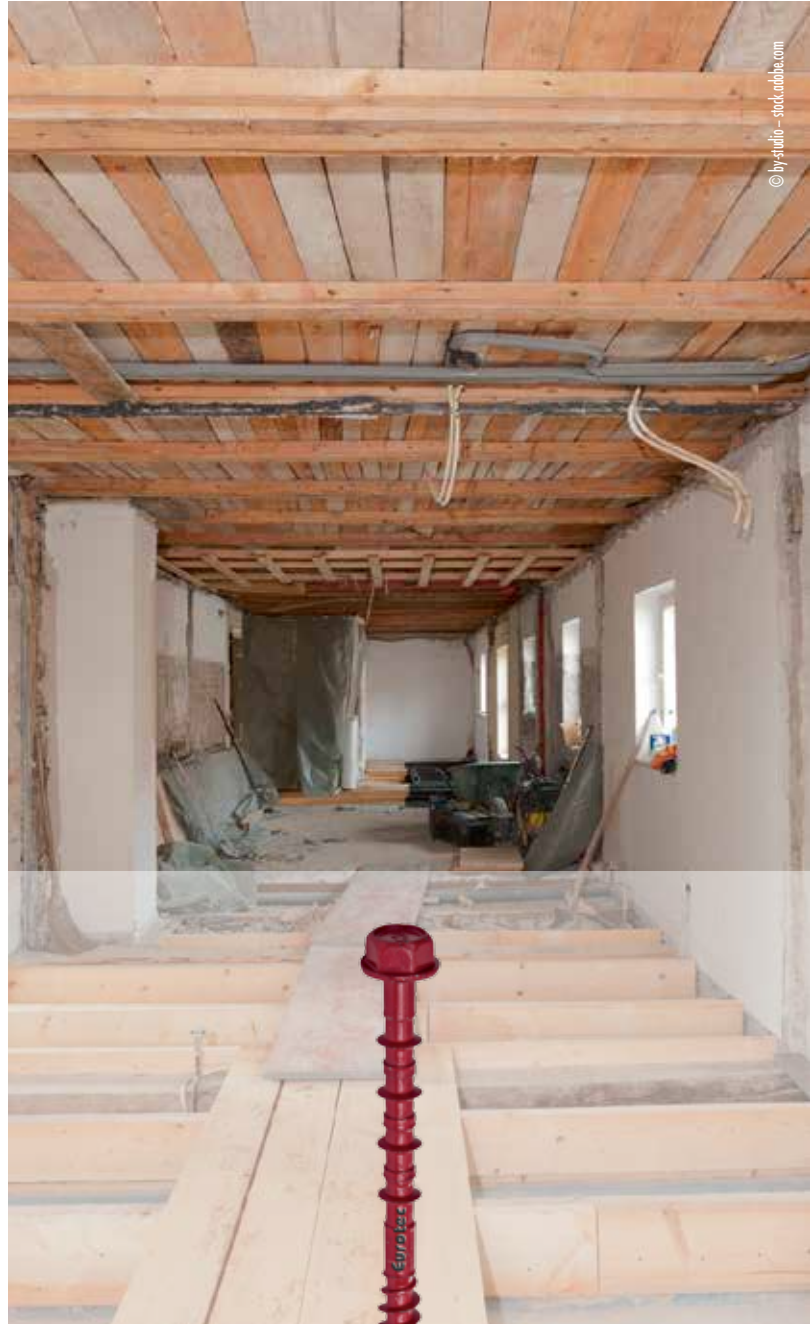


What can it be used for?

- Is used both in new builds and in the renovation of residential and commercial buildings
- Combining wood and reinforced concrete

Advantages

- Increased load-bearing capacity
- Increased rigidity
- Improved sound insulation
- Increased fire resistance
- The existing joists are retained
- The boarding can be retained (Topfloor system)



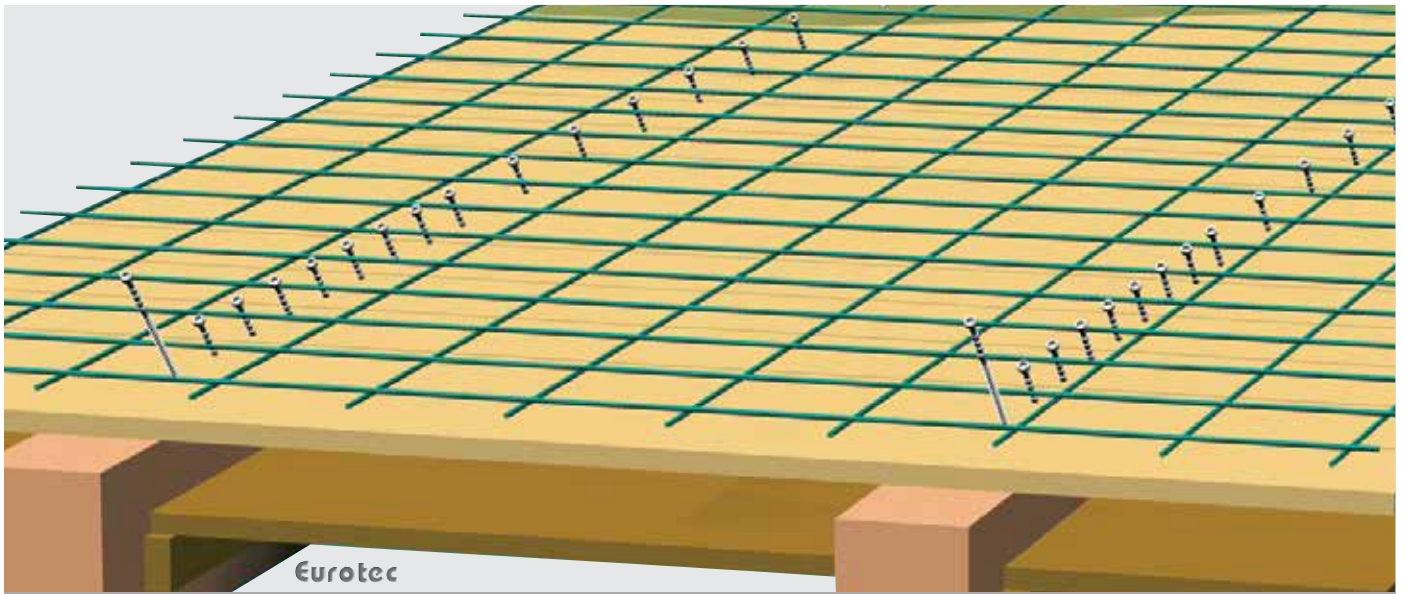
© by studio - stock.adobe.com



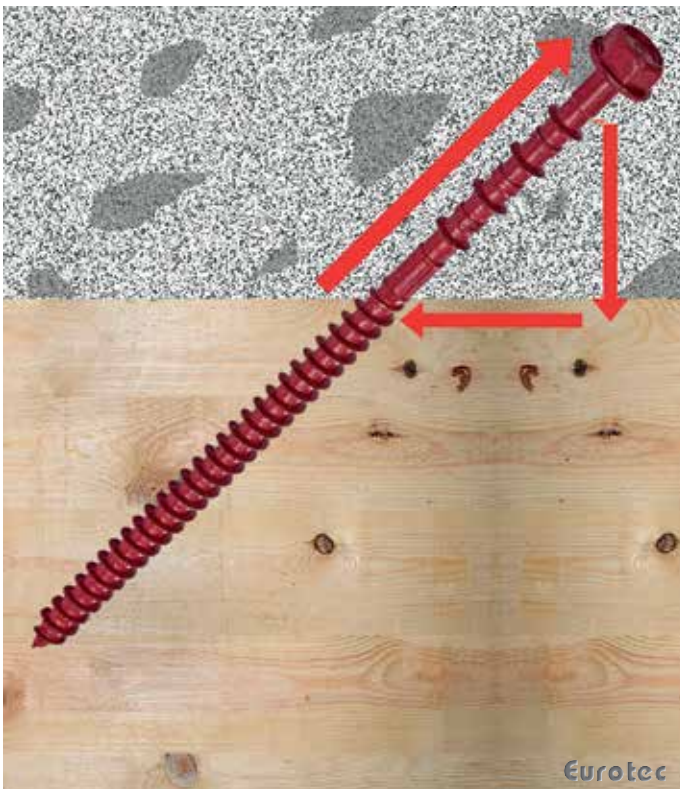
Wood-concrete composite

Composite screw

Art. no.	Dimensions [mm]	PU
903592	9 x 180	200
901589	7,3 x 150	200

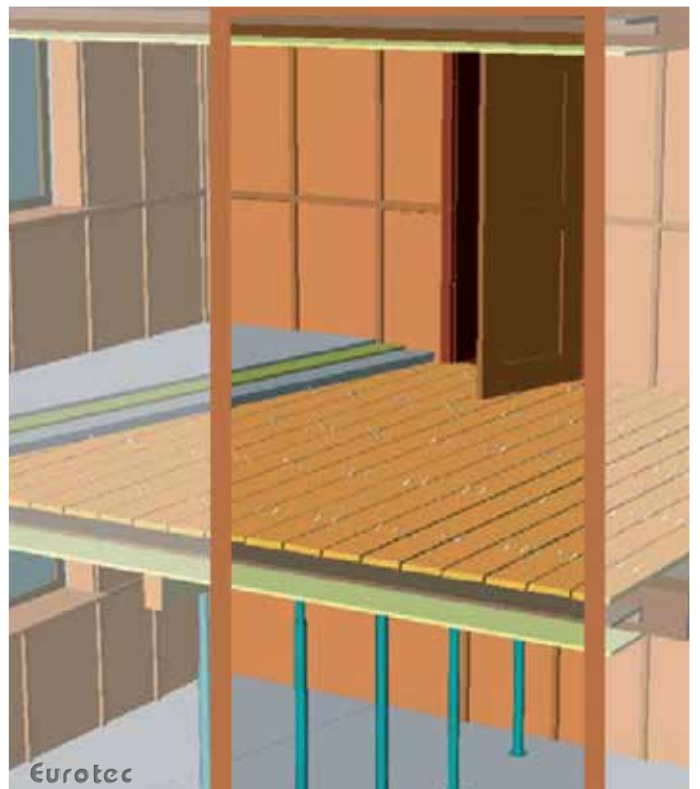


Topfloor (concrete on the top side)



Intelligent load conversion

The ceiling load is resolved into compression components between the concrete and timber and tension components in the special screw.

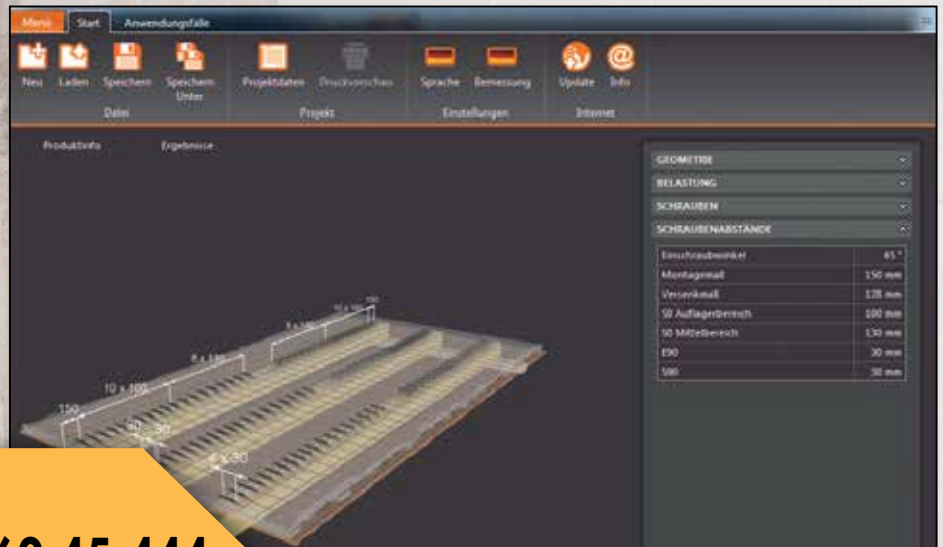
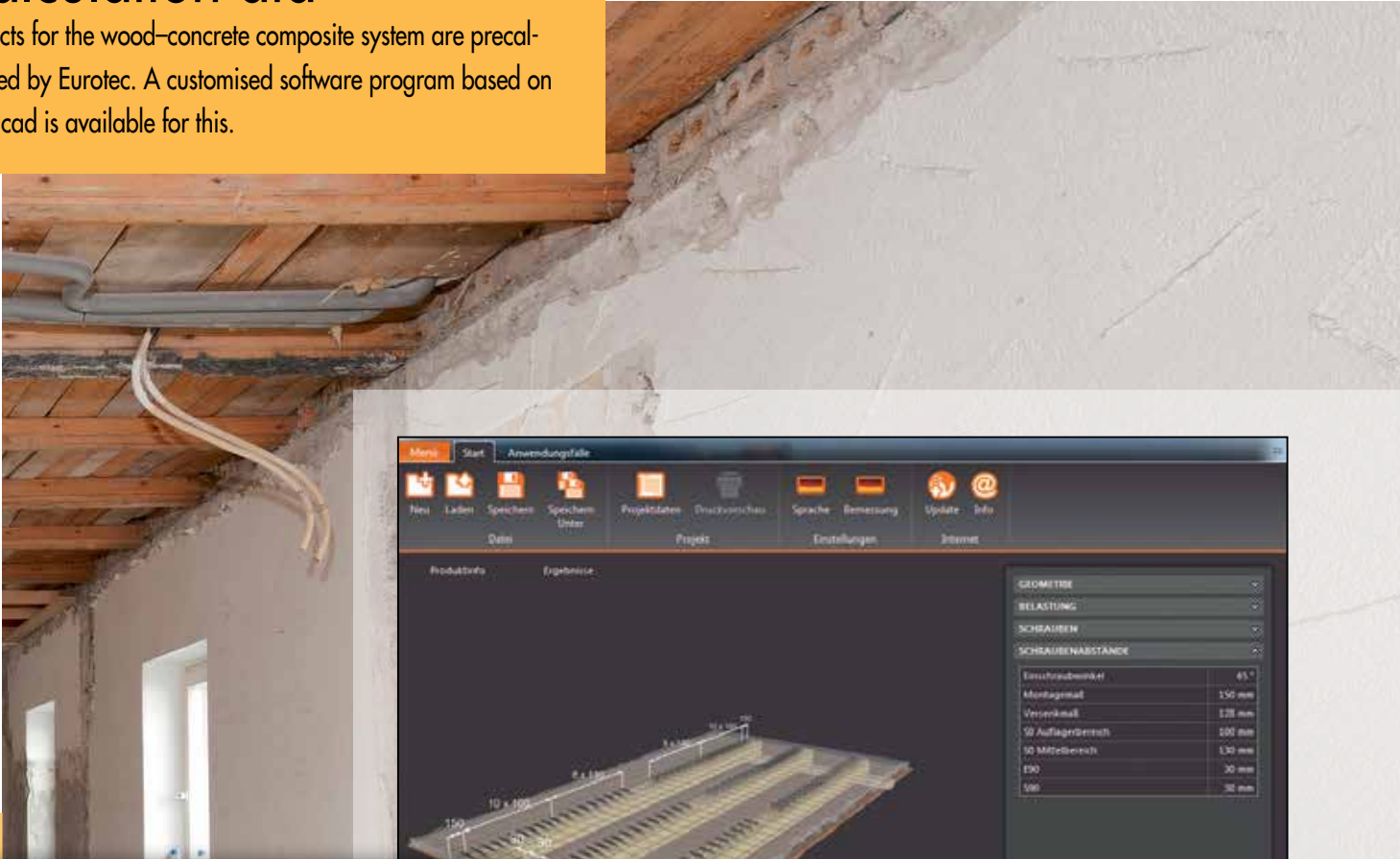


Construction in the existing structure

Props lift the sag of the existing ceiling joists.

Calculation aid

Projects for the wood-concrete composite system are precalculated by Eurotec. A customised software program based on Mathcad is available for this.



Please contact us:
Tel.: 0049 (0) 23 31 - 62 45-444
Email: technik@eurotec.team

