



## OUR **COMPETENCES**

Timber | Deck and Garden | Roof | Façade | Concrete

**20**  
**YEARS**  
of quality

## Eurotec fastening systems for modern timber-frame construction both indoors and

### Timber construction connectors

#### Developed for modern timber construction

- Timber frame and solid timber construction
- For installation in wood and concrete
- For absorbing tensile and shearing forces

#### Advantages

- Many different fields of application
- High load-bearing capacity  
→ fewer connectors required
- Indirect fixing due to an intermediate layer (e. g. OSB)
- Optimised hole pattern

#### ■ Tension strap HB60/HB70



#### ■ Shearing plate



#### ■ Tension strap HH60/HH70

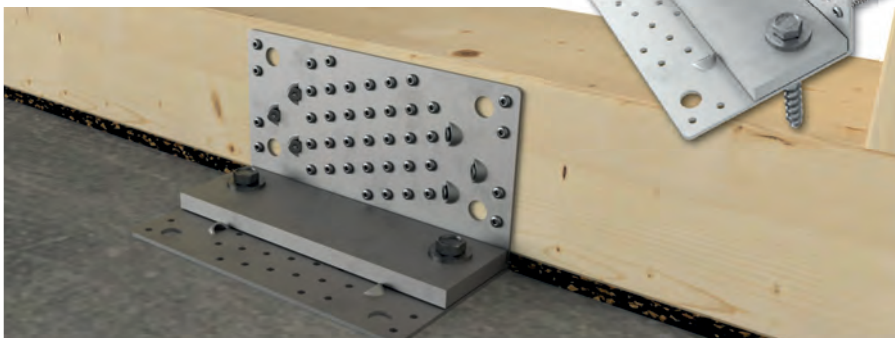


#### ■ Shearing angle incl. pressure plate



**NEW**  
to our product range

More  
products on  
[www.eurotec.team](http://www.eurotec.team)



## outdoors



### Paneltwistec DAG

Thanks to new screw tip:

- Reduced screwing torque
- Reduced splitting effect
- Screws have a better "bite"

Also for fastening over-rafter insulation.



- Classic wood construction screw
- Can be used in usage classes 1 and 2

### KonstruX ST fully threaded screws



- The powerful solution for construction and renovation
- High extraction resistance
- Excellent load transmission
- No pilot-drilling necessary



Cylinder head, galvanised



Countersunk head, galvanised



Countersunk head, galvanised with AG tip

Benefits of ST drill point:

- Reduced screwing torque
- Greater extraction resistance



### PediX post feet

- Easy assembly with no timber preparation work, pilot-drilling or milling
- Min. timber cross section of 100 x 100 mm
- Additional constructive timber protection thanks to gasket on end grain
- Hot-dip galvanised structural steel S235JR (ST37-2)
- Comes supplied with 12 fully threaded A2 screws measuring 5,0 x 80 mm
- All PediX post feet can be used in the usage classes 1, 2 and 3 in accordance with DIN EN 995-1 - 1
- In addition to the vertical loads, the PediX B500 HV, PediX 140+50 HV, PediX 190+100 HV and PediX 300+150 HV post feet can also dissipate horizontal forces into the subsurface
- High tensile and compressive load capacities in accordance with ETA-13/0550





## Building patios has never been so easy!

### Adjustable pedestals

#### Profi-Line



#### ECO-Line



#### Nivello 2.0

Compensates a slope of 0,5 - 10%.  
Suitable for Eurotec Profi and  
ECO-Line pedestals.



### Fastening systems

- Distance strip
- Deck gliders
- T-Stick
- Twin system clip
- Screws
- ... and many more!

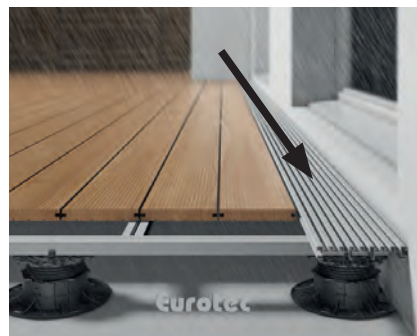


Many more  
fasteners are  
available at  
[www.eurotec.team!](http://www.eurotec.team!)

We will be happy to work with  
you to develop custom  
solutions.



### DrainTec – aluminium drainage grate



#### Without DrainTec

Without **DrainTec** the reflected rainwater splashes onto the door element or façade cladding.

#### With DrainTec

With **DrainTec** the rain is drained off in a controlled manner and the rainwater flows directly into the foundation.

- As drainage for façade and deck surfaces
- Suitable for areas that connect to doors, for example, or transitions from vertical façade surfaces to horizontal deck surfaces
- Heavy rain is drained off in a controlled manner
- For creating barrier-free, wheelchair-friendly transitions
- Also suitable for direct mounting on load-bearing foundations
- The flat geometry (21 x 140 mm) allows the grate to be combined with standard deck boards or fine stoneware slabs







## Aluminium profiles

Can be extended using suitable connecting elements

- Evenco aluminium system profile



- EVO aluminium system profile

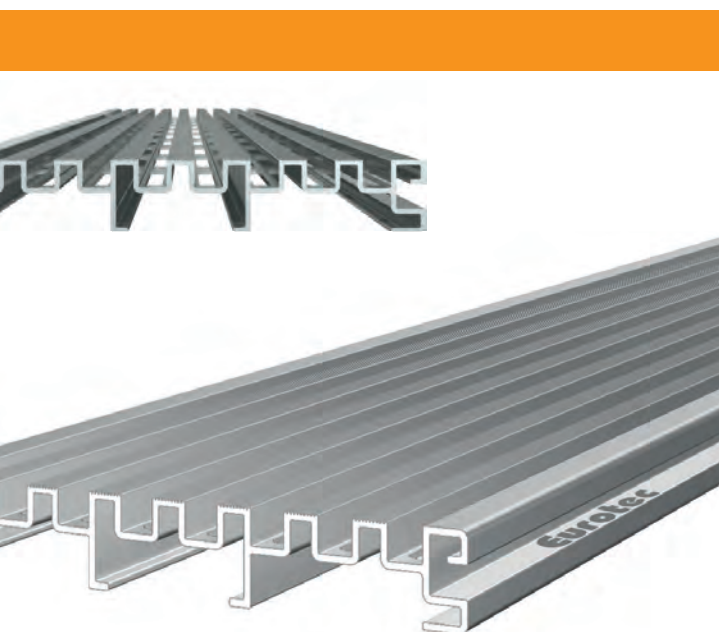
Also available in black



- EVO Slim aluminium system profile



EVO-Line aluminium profiles can be combined with Eurotec's multifunctional Stone System installation system, allowing deck coverings consisting of stone slabs and deck boards

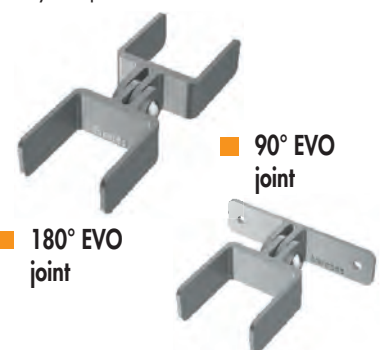


## 90° / 180° EVO joint

For connecting EVO aluminium system profiles across corners (e. g. for stairs)



- Freely rotating joint
- For angles of up to 90° or 180°
- Individual positioning in the EVO system profile



■ 90° EVO joint

■ 180° EVO joint

## The perfect product for every requirement

### Fastening for flat roof & façade

#### ■ BiGHTY drilling screw

Fastening steel on steel / timber on timber /  
steel on timber

- Drills its own core hole and the counter-thread in the component itself
- This allows fastdrilling
- It is no longer necessary to centre-punch the drilling site
- High corrosion resistance



BiGHTY drilling screw  
Hardened stainless steel



BiGHTY drilling screw  
Bi-Metal

#### ■ Roofing screw



#### ■ Klimax ECO 1 / ECO 2



#### ■ Washered screw



#### ■ Coloured façade screw



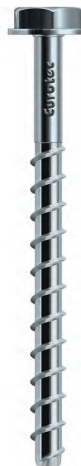
### Concrete fastening

#### ■ Rock concrete screws

- Anchoring in concrete (C20/25 to C50/60 normal concrete)
- As it is screwed in, the thread cuts a mating thread into the subsurface
- High-strength screw steel
- Extremely complex annealing process
- Special thread



Countersunk head,  
galvanised steel



Hexagonal  
with flange,  
galvanised steel

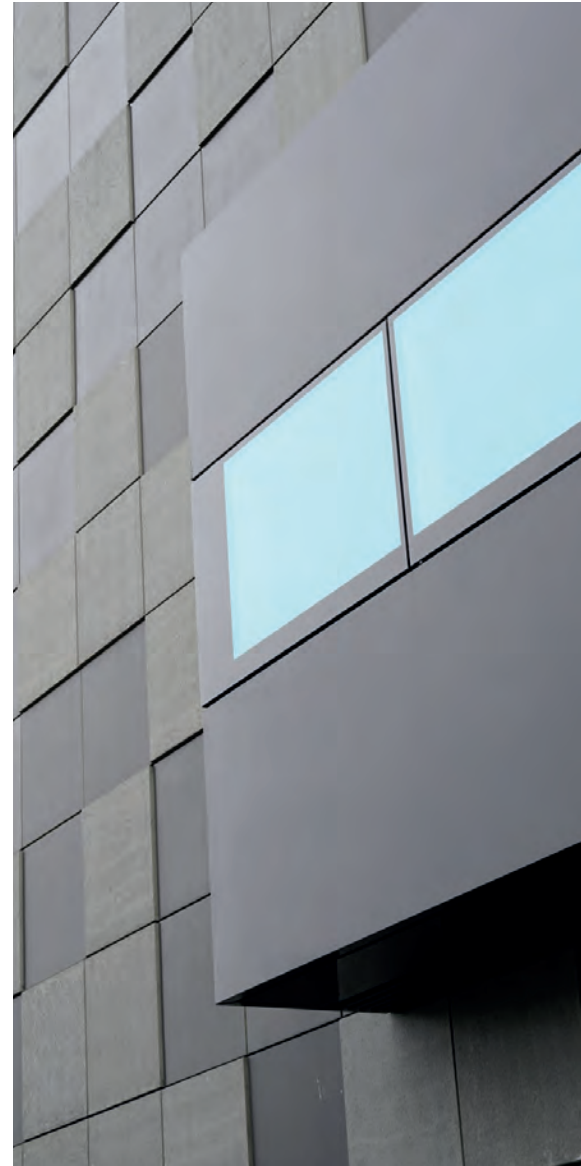


Hexagonal,  
galvanised steel



Hexagonal  
with flange,  
special coated

**NEW**  
to our product range





## ■ Façadeclip

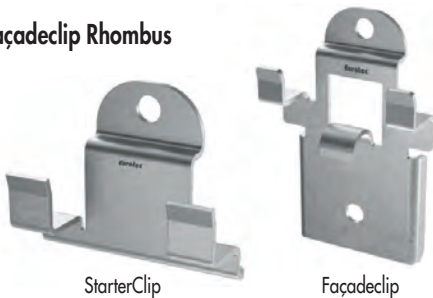


### For hidden fastening of façade wood

- For façade timbers with a profile height of 57– 95 mm
- Hidden fastening
- Perfect constructive timber protection
- Ventilated façade system with spaced installation
- The façade timber's surface that is exposed to the weather remains undamaged
- Efficient and easy installation



## ■ Façadeclip Rhombus



**NEW**  
to our product range

### System consisting of a StarterClip and a Façadeclip

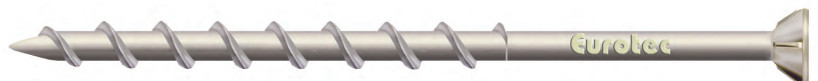
- Optimised rear ventilation by constructive timber protection
- Invisible fastening
- Formation of fixed points and sliding points
- Easy installation
- Weather-resistant



## ■ Injection mortar



## ■ Porous concrete screw



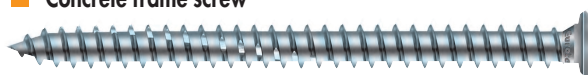
## ■ Bolt anchor



## ■ Sealing plug



## ■ Concrete frame screw



Stay  
up-to-date with our  
**Newsletter.**  
Sign up on  
[www.eurotec.team](http://www.eurotec.team)  
and don't miss any news!

## **Complete catalogue**

Order or download it as a PDF file  
from **[www.eurotec.team/en](http://www.eurotec.team/en)**

E.u.r.o.Tec GmbH

Unter dem Hofe 5 · D-58099 Hagen · Germany

Tel. 0049 (0)2331 62 45-0 · Fax 0049 (0)2331 62 45-200

E-Mail: [info@eurotec.team](mailto:info@eurotec.team) · [www.eurotec.team/en](http://www.eurotec.team/en)